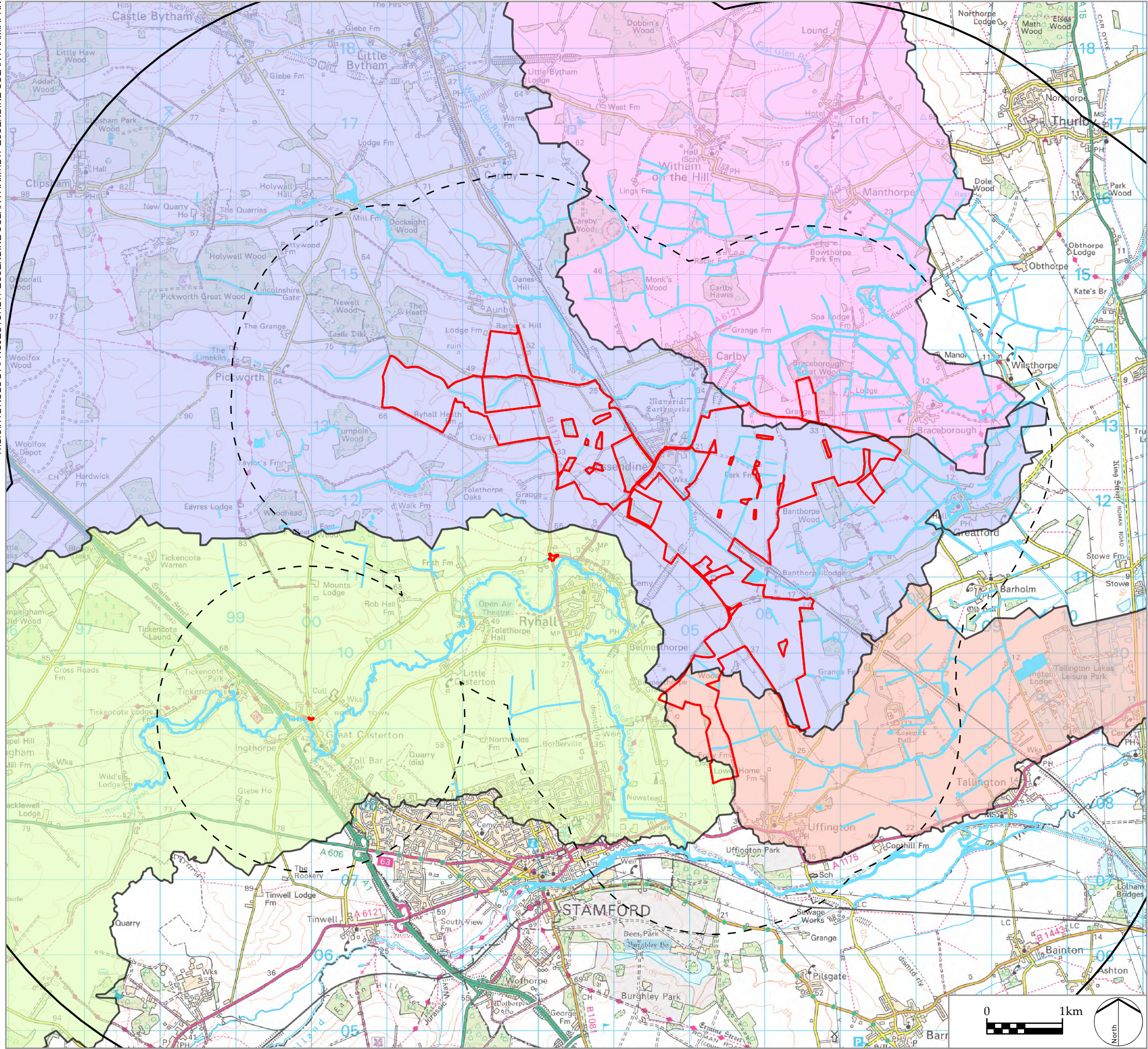


Y:\GIS\HYDROLOGY\PROJECTS\4217 ESSENDINE SOLAR FARM\4217 ESSENDINE SOLAR FARM.APRX



Infrastructure Planning (Applications:  
Prescribed Forms and Procedure) Regulations 2009  
APFP Regulation: 5(2)(a) and 5(l)

PINS REFERENCE NUMBER  
EN010127

LEGEND

- Order limits
- Study Area (2 km)
- Wider Study Area (5 km)
- Watercourse

Catchment

- East Glen River
- River Gwash
- Tallington Lakes / Greatford Cut
- West Glen River

P0 DCO Submission  
REV. DESCRIPTION

RP 06/11/22  
APP. DATE

PROJECT TITLE

MALLARD PASS SOLAR FARM

DRAWING TITLE

Figure 11.6: Water Bodies in a River Basin  
Management Plan

ISSUED BY	Oxford	T: 01865 887050
DATE	Nov 2022	DRAWN SC
SCALE @A3	1:50,000	CHECKED LN
STATUS	Final	APPROVED LN

DWG. NO. 4217-REP-009 REV: P0

No dimensions are to be scaled from this drawing.  
All dimensions are to be checked on site.  
Area measurements for indicative purposes only.

© LDA Design Consulting Ltd. Quality Assured to BS EN ISO 9001 : 2015

Sources: Ordnance Survey